

Hampshire Water Transfer and Water Recycling Project Environmental Statement - Figure 11.4 Source Protection Zones located within the study area

VOLUME NUMBER: 6

PLANNING INSPECTORATE SCHEME NUMBER: WA010002

APPLICATION DOCUMENT REFERENCE: 6.3

APFP REGULATION: 5(2)(a)

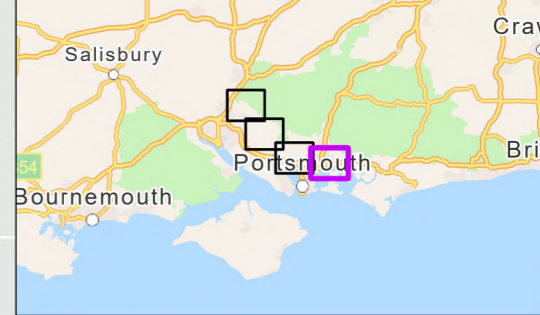
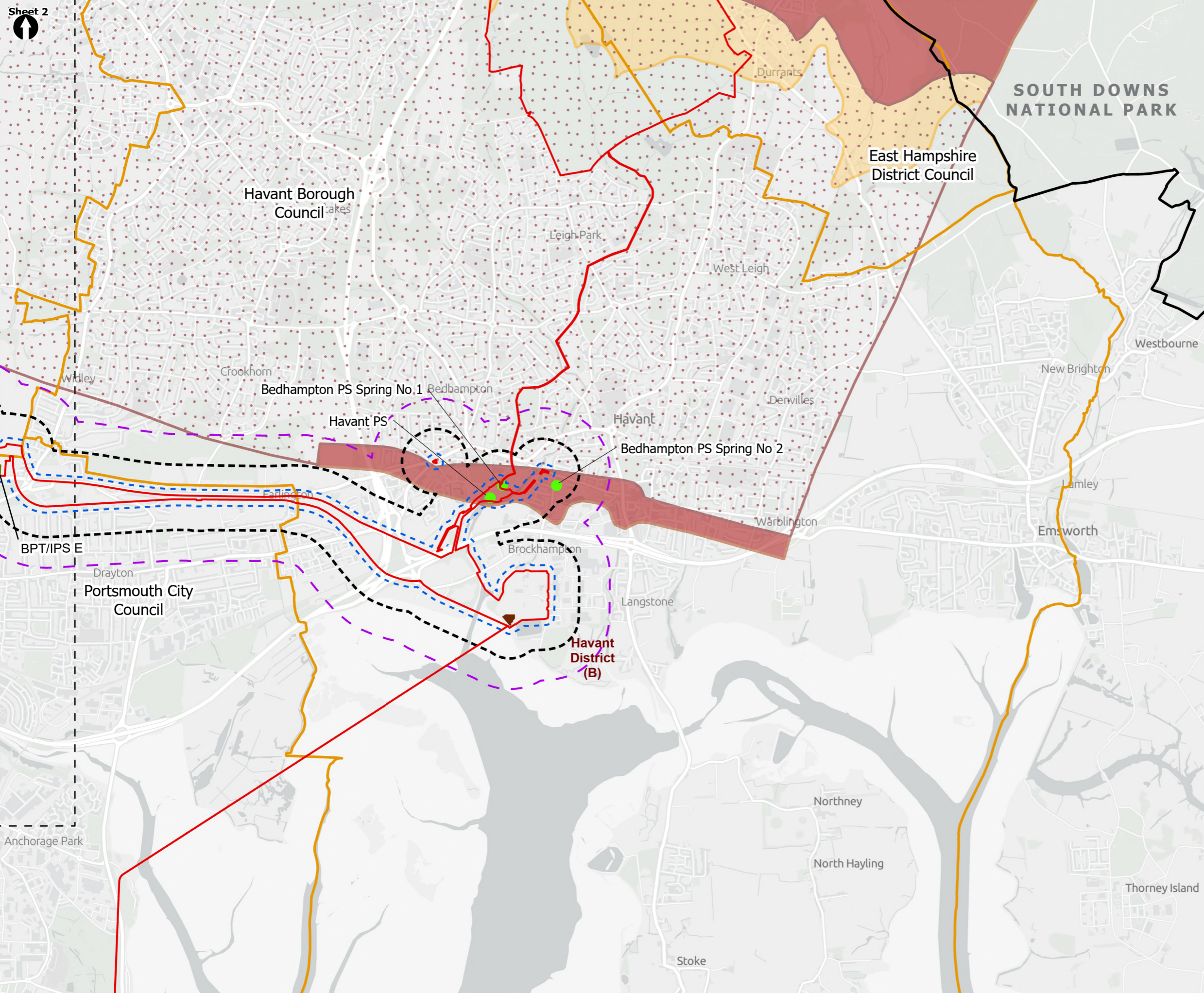
May 2026

Version 0



from
**Southern
Water** 

The Southern Water logo consists of the words 'Southern' and 'Water' stacked vertically in a dark blue, sans-serif font. To the right of the word 'Water' is a graphic element consisting of three stylized, wavy blue lines of varying lengths, representing water waves. A registered trademark symbol (®) is located to the right of the word 'Water'.



Order Limits

- Order Limits
- Sheet Extent Boxes 1:30K
- National Parks
- Local planning authorities
- Limits of Deviation for Budds Farm Pumping Station

Study Areas

- 50m Study Area
- 250m Study Area
- 500m Study Area

Potable Water Abstractions

- Portsmouth Water Abstraction Locations

Source Protection Zones

- Zone 1
- Zone 1c
- Zone 2
- Zone 3
- Zone 4

Above Ground Plant

- Break Pressure Tank & Intermediate Pumping Station

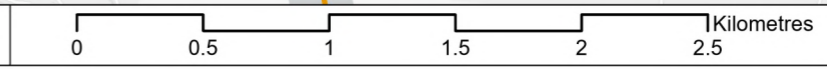
Coordinate system: British National Grid; Datum: OSGB 1936
 Data sources: © Crown copyright and database rights 2026 Ordnance Survey 0100031673. Contains OS data © Crown Copyright and database right 2026
 Contains data from OS Zoomstack, Sources: Esri, TomTom, Garmin, FAO, NOAA, USGS, © OpenStreetMap contributors, and the GIS User Community

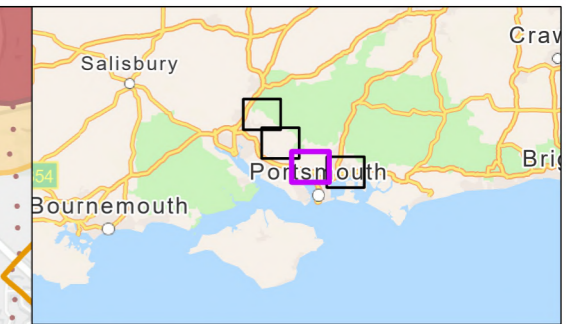
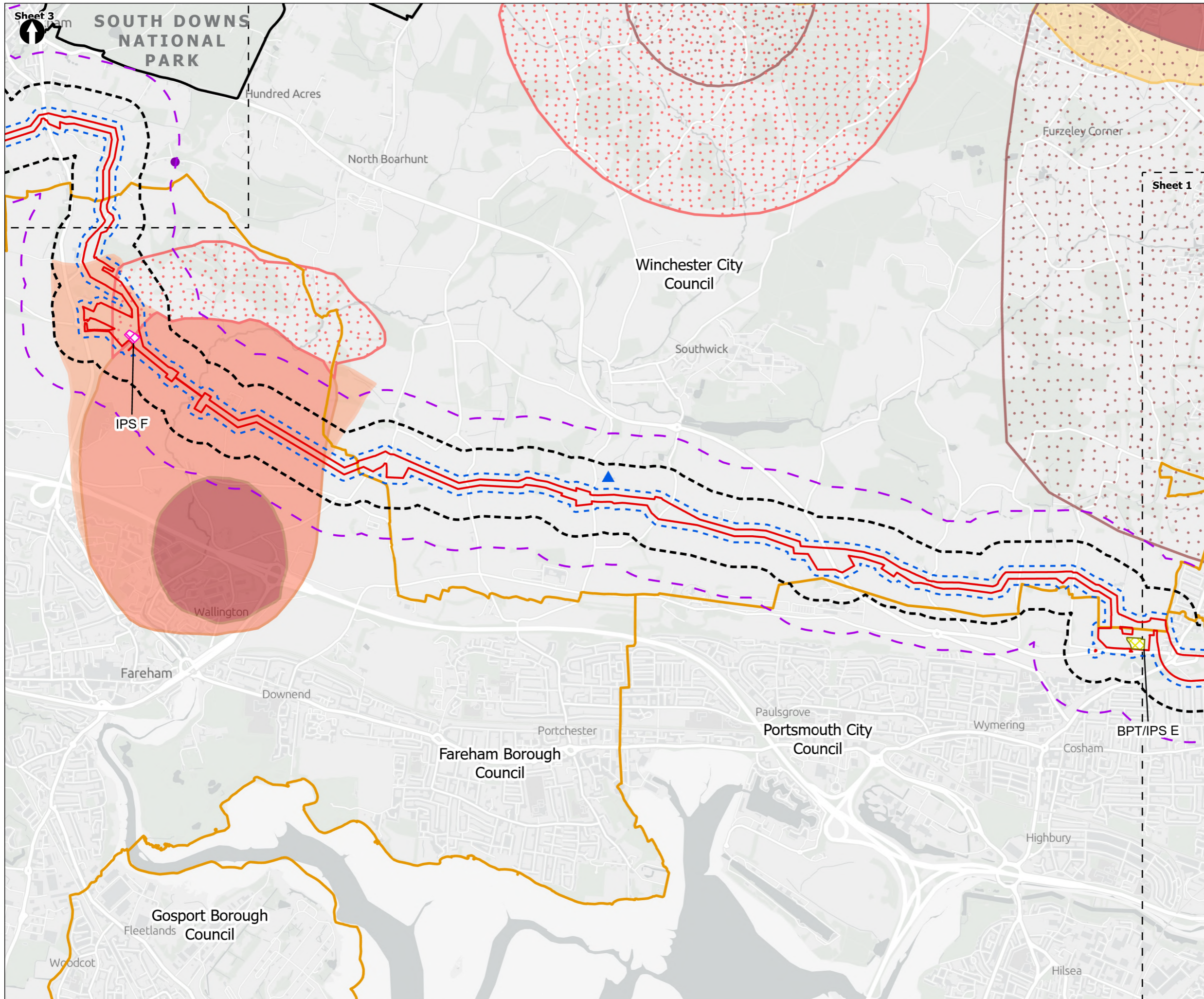
PROJECT TITLE
 Hampshire Water Transfer and Water Recycling Project



Figure 11.4
 Source Protection Zones located within the study area
 Sheet 1 of 4

Drawn DL	GIS Checked MW	Checked MP	Approved AK
Scale at A3 1:30,000	Status Final	Revision 05	Security STD





- Order Limits
- Sheet Extent Boxes 1:30K
- National Parks
- Local planning authorities
- Study Areas**
- 50m Study Area
- 250m Study Area
- 500m Study Area
- Ground Water Abstractions**
- Private Water Supply Abstractions - Winchester City Council
- ▲ Commercial Water Supply Abstractions - Winchester City Council
- Source Protection Zones**
- Zone 1
- Zone 1c
- Zone 2
- Zone 2c
- Zone 3
- Zone 4
- Above Ground Plant**
- Break Pressure Tank & Intermediate Pumping Station
- Intermediate Pumping Station

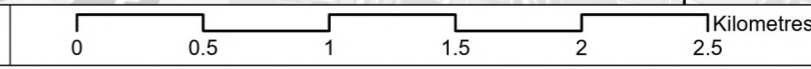
Coordinate system: British National Grid; Datum: OSGB 1936
 Data sources: © Crown copyright and database rights 2026 Ordnance Survey 0100031673. Contains OS data © Crown Copyright and database right 2026
 Contains data from OS Zoomstack, Sources: Esri, TomTom, Garmin, FAO, NOAA, USGS, © OpenStreetMap contributors, and the GIS User Community

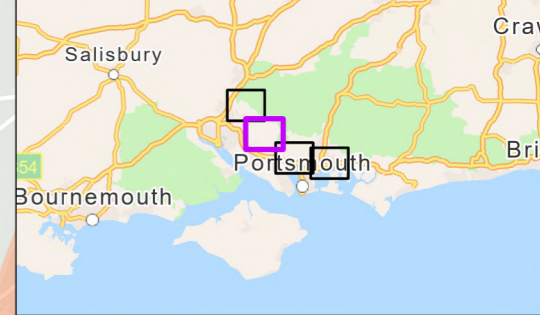
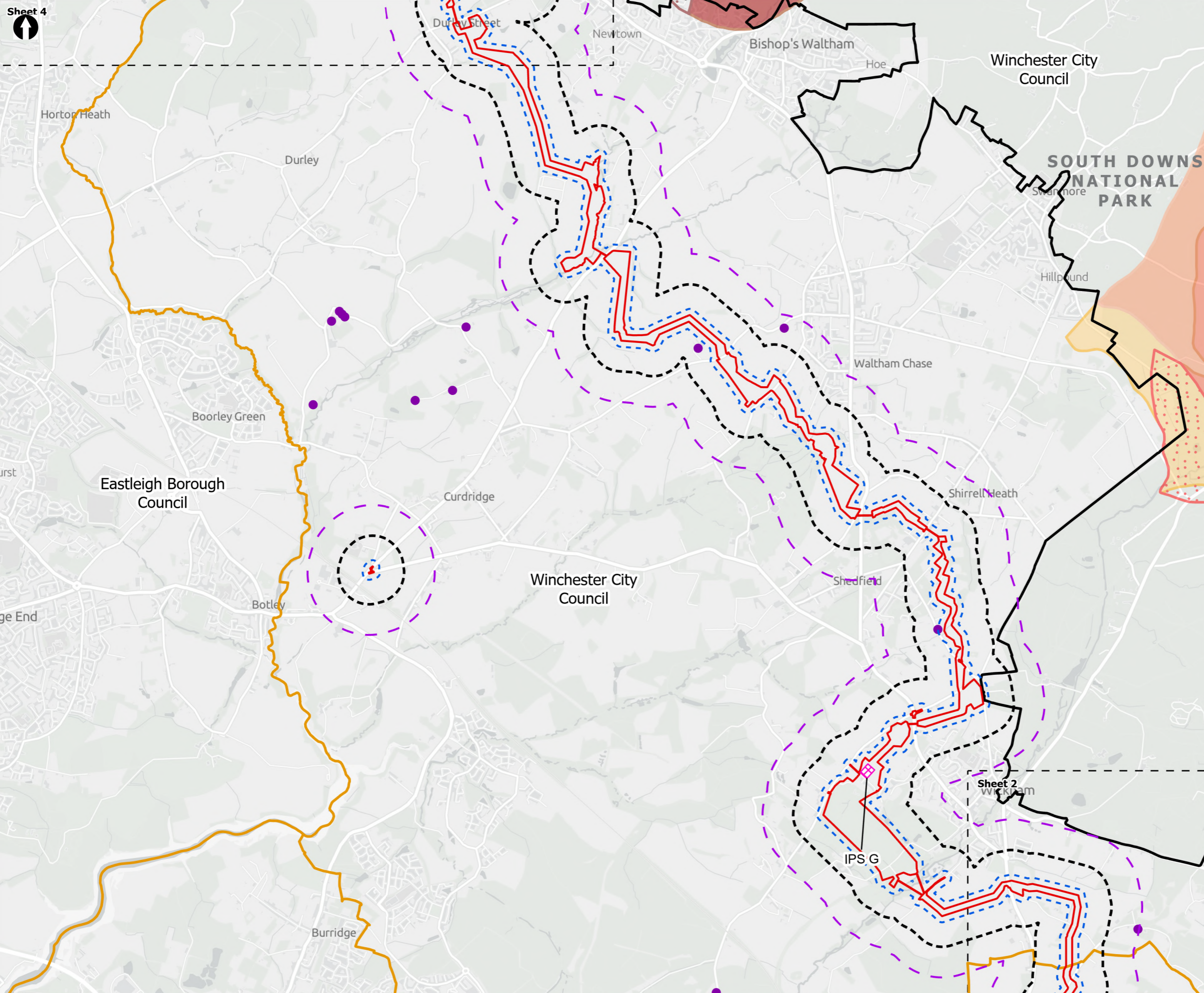
PROJECT TITLE
 Hampshire Water Transfer and Water Recycling Project



Figure 11.4
 Source Protection Zones located within the study area
 Sheet 2 of 4

Drawn DL	GIS Checked MW	Checked MP	Approved AK
Scale at A3 1:30,000	Status Final	Revision 05	Security STD





Order Limits
 [Red outline symbol] Order Limits

Sheet Extent Boxes 1:30K
 [Dashed black outline symbol] Sheet Extent Boxes 1:30K

National Parks
 [Thick black outline symbol] National Parks

Local planning authorities
 [Yellow outline symbol] Local planning authorities

Study Areas

- [Blue dashed outline symbol] 50m Study Area
- [Black dashed outline symbol] 250m Study Area
- [Purple dashed outline symbol] 500m Study Area

Ground Water Abstractions

- [Purple dot symbol] Private Water Supply Abstractions - Winchester City Council

Source Protection Zones

- [Brown fill symbol] Zone 1
- [Light brown fill symbol] Zone 1c
- [Orange fill symbol] Zone 2
- [Red dotted fill symbol] Zone 2c
- [Light orange fill symbol] Zone 3
- [Yellow fill symbol] Zone 4

Above Ground Plant

- [Pink hatched symbol] Intermediate Pumping Station

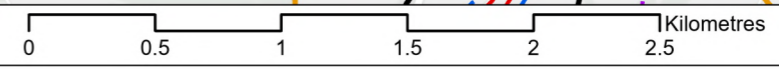
Coordinate system: British National Grid; Datum: OSGB 1936
 Data sources: © Crown copyright and database rights 2026 Ordnance Survey 0100031673. Contains OS data © Crown Copyright and database right 2026
 Contains data from OS Zoomstack. Sources: Esri, TomTom, Garmin, FAO, NOAA, USGS, © OpenStreetMap contributors, and the GIS User Community

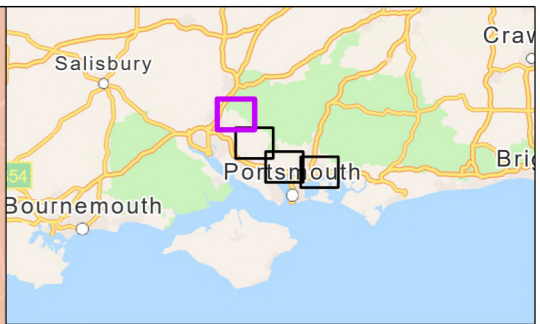
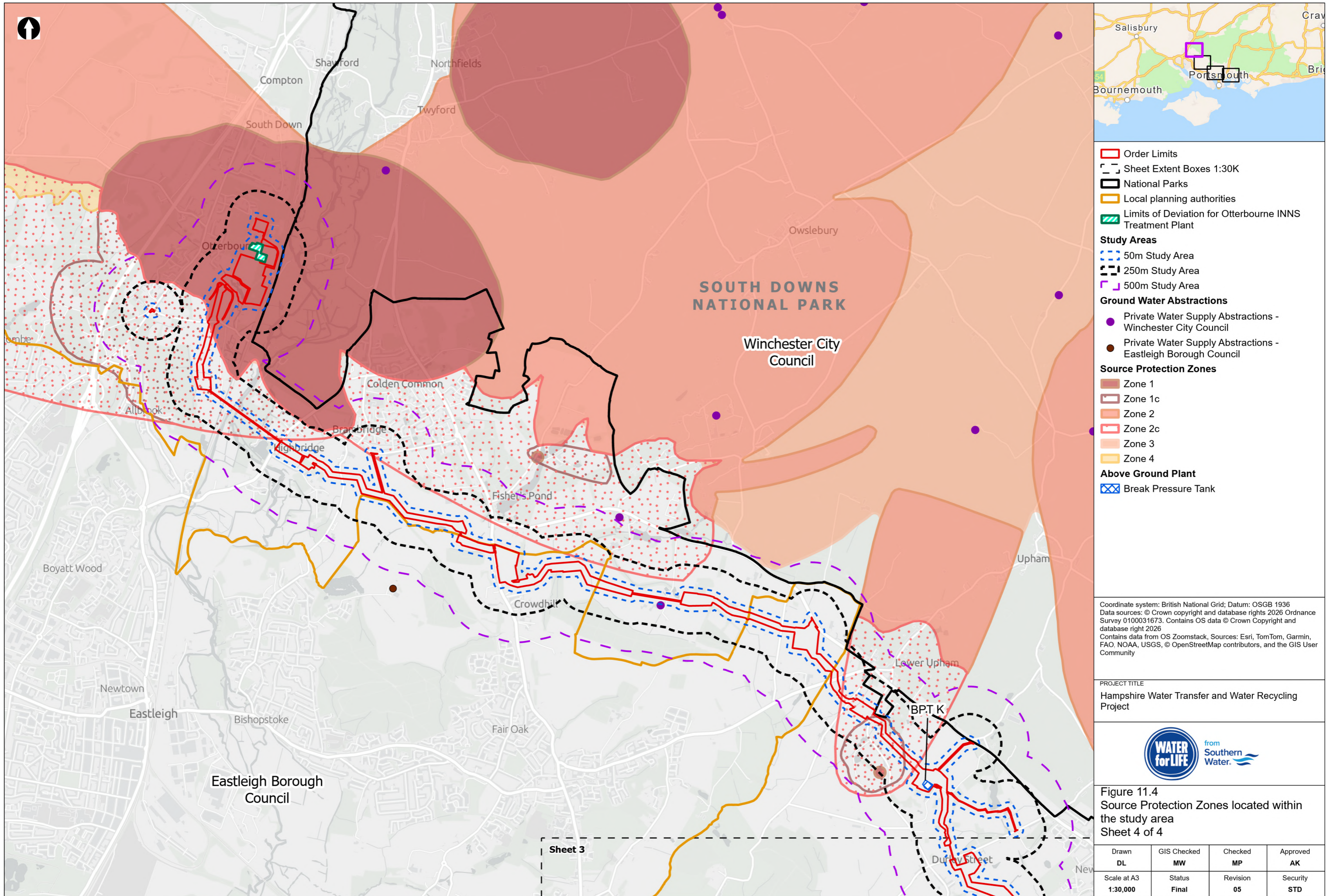
PROJECT TITLE
 Hampshire Water Transfer and Water Recycling Project



Figure 11.4
 Source Protection Zones located within the study area
 Sheet 3 of 4

Drawn DL	GIS Checked MW	Checked MP	Approved AK
Scale at A3 1:30,000	Status Final	Revision 05	Security STD





- Order Limits
- Sheet Extent Boxes 1:30K
- National Parks
- Local planning authorities
- Limits of Deviation for Otterbourne INNS Treatment Plant
- Study Areas**
- 50m Study Area
- 250m Study Area
- 500m Study Area
- Ground Water Abstractions**
- Private Water Supply Abstractions - Winchester City Council
- Private Water Supply Abstractions - Eastleigh Borough Council
- Source Protection Zones**
- Zone 1
- Zone 1c
- Zone 2
- Zone 2c
- Zone 3
- Zone 4
- Above Ground Plant**
- Break Pressure Tank

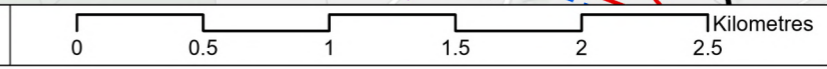
Coordinate system: British National Grid; Datum: OSGB 1936
 Data sources: © Crown copyright and database rights 2026 Ordnance Survey 0100031673. Contains OS data © Crown Copyright and database right 2026
 Contains data from OS Zoomstack, Sources: Esri, TomTom, Garmin, FAO, NOAA, USGS, © OpenStreetMap contributors, and the GIS User Community

PROJECT TITLE
 Hampshire Water Transfer and Water Recycling Project



Figure 11.4
 Source Protection Zones located within the study area
 Sheet 4 of 4

Drawn DL	GIS Checked MW	Checked MP	Approved AK
Scale at A3 1:30,000	Status Final	Revision 05	Security STD



Drawing Number
PC5223-RHD-ES-ZZ-D-Z-0012